
Instructions manual BluRadio

System requirements:

- System: Windows XP/Vista/7/8/10
- Installed JAVA (min 1.8.0)
- minimal free RAM memory 512MB, 1GB recommended

Installation of BluRadio

Download and launch the BluRadio software from either of the following link depending on the version of Windows you have 32 bits (x86) or 64 bits (x64). To know which version of Windows your computer is running, go to Control Panel > System and security > System:

https://www.dropbox.com/s/675ppzi7gdhkh5y/bluRadio_1.0_setup_x64.exe?dl=0

https://www.dropbox.com/s/hvmx6dyb6ju1xh4/bluRadio_1.0_setup_x86.exe?dl=0

In case of systems such as Windows/Vista/7/8/10 it is recommended to start the installation process in administrator mode. To enter the administrator mode, click RMB (right mouse button) on the installation file mentioned above and choose the command *Start as administrator*.

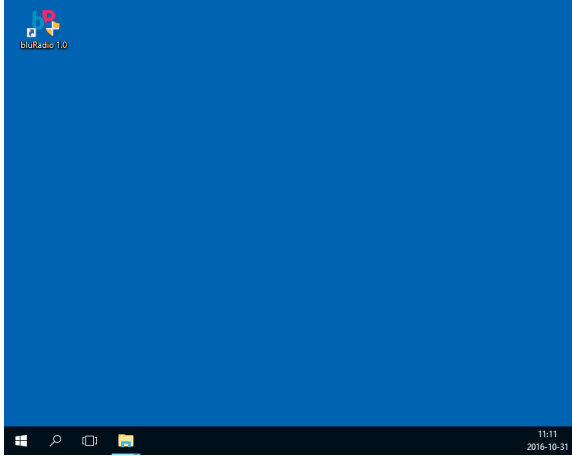
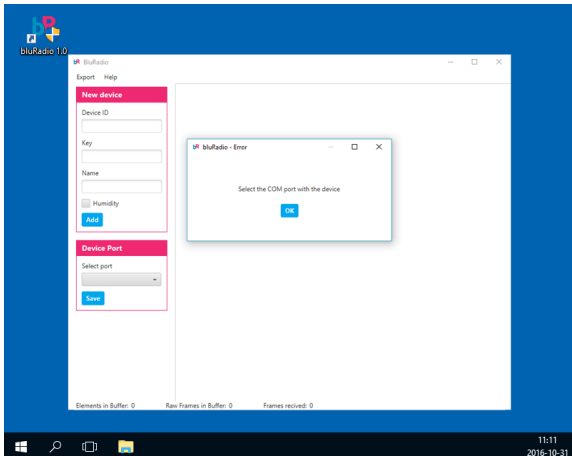
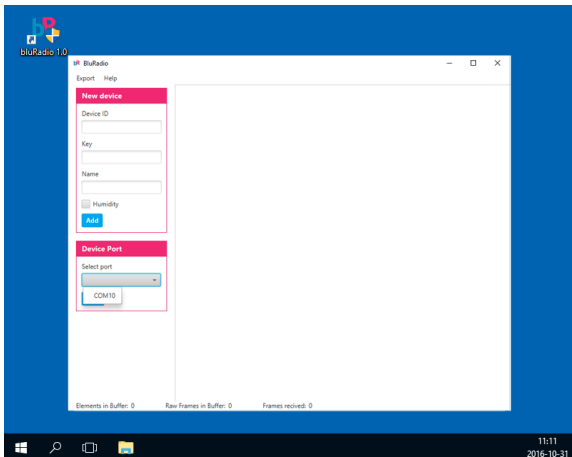
During the installation you will be asked to choose the destination folder for the files to install. The default path is *C:\Program Files (x86)\bluRadio*. Once the installation is finished, a shortcut will appear on the Desktop: *bluRadio 1.0*

USB device drivers installation

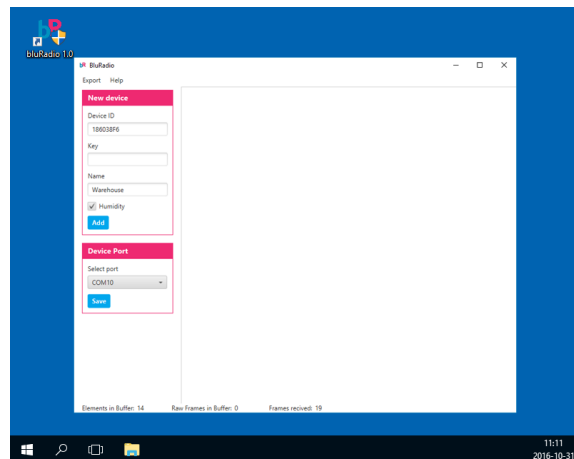
The device drivers installation is simultaneous to the bluRadio software installation. Once the software is installed, just before the completion of entire installation process, the USB receiver device drivers installer window will show up. If the driver is already installed, you will be asked if you want it to be re-installed or deleted. You can also skip the device driver installation process by clicking on the *Cancel* button.

It is recommended to plug the device to the chosen USB port during the installation. In order to verify the installation, go to the Control Panel >> Device Manager. If there is an information regarding the Spirit1 USB device followed by a yellow triangle or a different warning sign, you should initialize drivers manually.

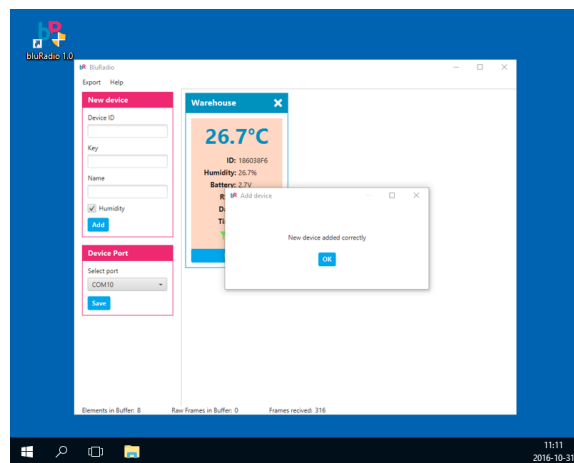
Initial activation

<p>Once the installation is finished, an icon of bluRadio with its version number should appear on the Desktop.</p> <p>It is recommended to initialize the program in administrator mode.</p>	
<p>When the program starts, you will be asked to choose the COM port to which the USB receiver is installed.</p> <p>Just press OK to close the windows</p>	
<p>In the section <i>Device Port</i> click on the grey label <i>Select port</i> and choose the suitable COM port. Once the port is chosen, you will be asked to restart the application.</p> <p>To switch off the application, do a right mouse click on the icon placed next to the clock and choose the <i>Close</i> option.</p> <p>Attention! Even if you click on the closing cross sign, it will only remove the application window from the taskbar. The app itself will be still working and can be restored by clicking on the bluRadio icon, next to the clock.</p>	

You can add new loggers now. To do it, go to the *New device* section and fill in the Device ID part, using the logger's ID number (capital letters and numbers). If the logger is provided with a key, you can tape it in the *Key* part. You can also add a *Name* value. If you have a logger with humidity option, you should mark *Humidity*. Then you can confirm by clicking the *Add* button.

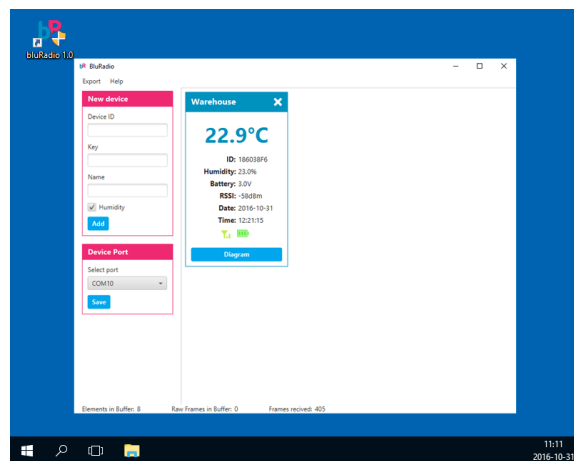


The program will notify you that the logger was correctly added. Depending on the logger's settings, new data can appear immediately or after an interval period - time set previously on the logger.

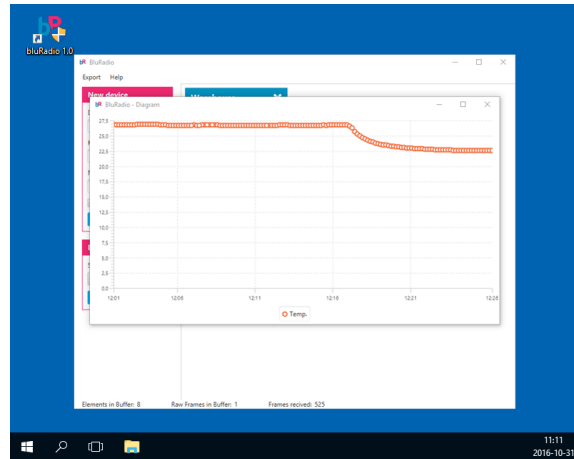


To delete one of the loggers, click on the white X icon placed on the right side of the blue logger's title bar.

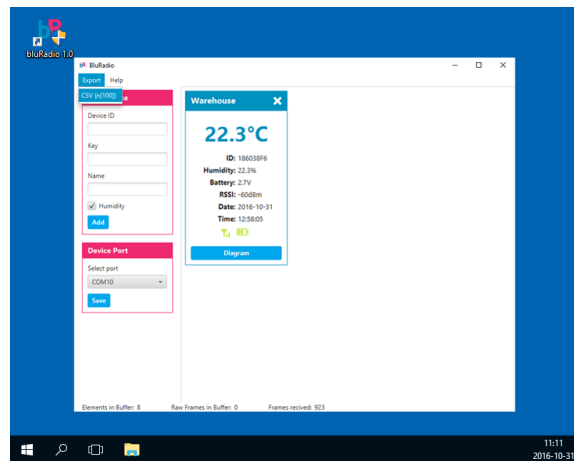
Attention! If the logger is removed, all the corresponding data collected will be removed as well.



If you click on the Diagram button, you will access the archived data. In this part you can see the last 4096 measurements.



Using the bluRadio application, you can easily export data to a CSV file. To do this, choose the *Export* option in the menu above and then select the (n[100]). A CSV file will be generated for all (n) defined objects, showing the last 100 measurements ([100]). Once files are generated, they will be saved in *csv-reports* folder, where the application was installed. The default path is *C:\Program Files (x86)\bluRadio\csv-reports*.



The logger's window will turn red when the temperature exceeds 25°C or blue if it drops below 7°C.