

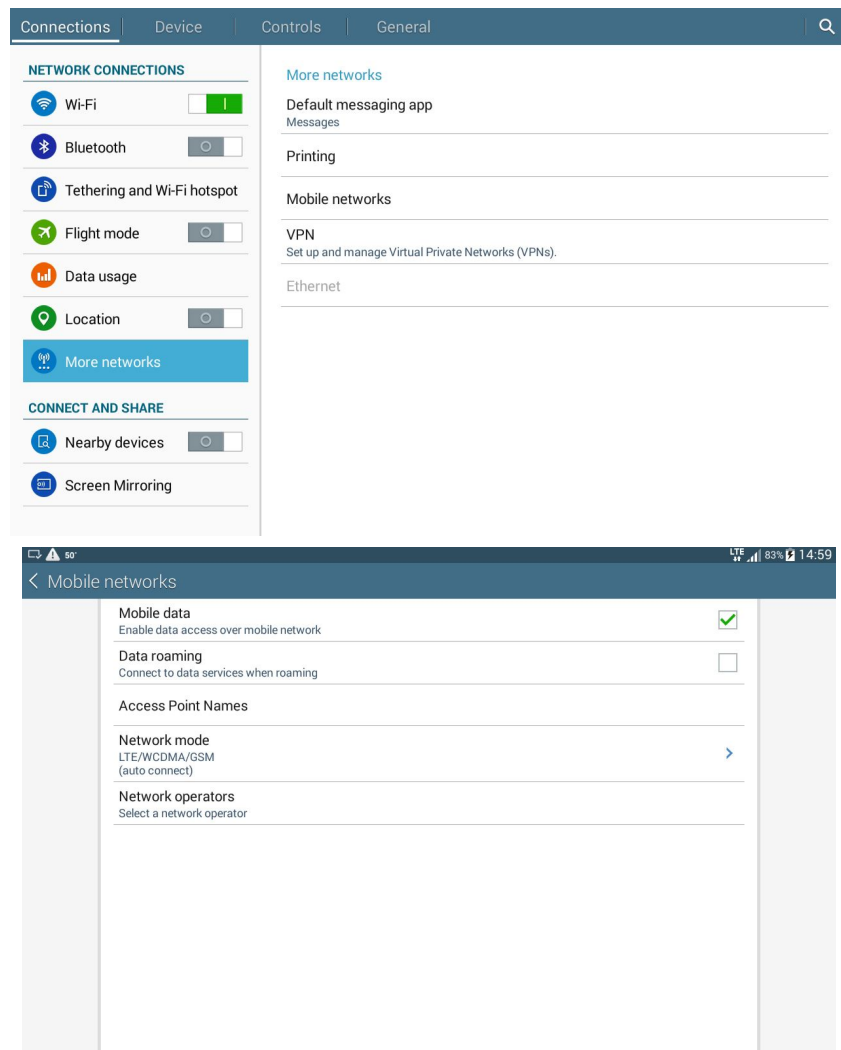
BluRadio - instructions manual

1. Start the tablet and configure the network

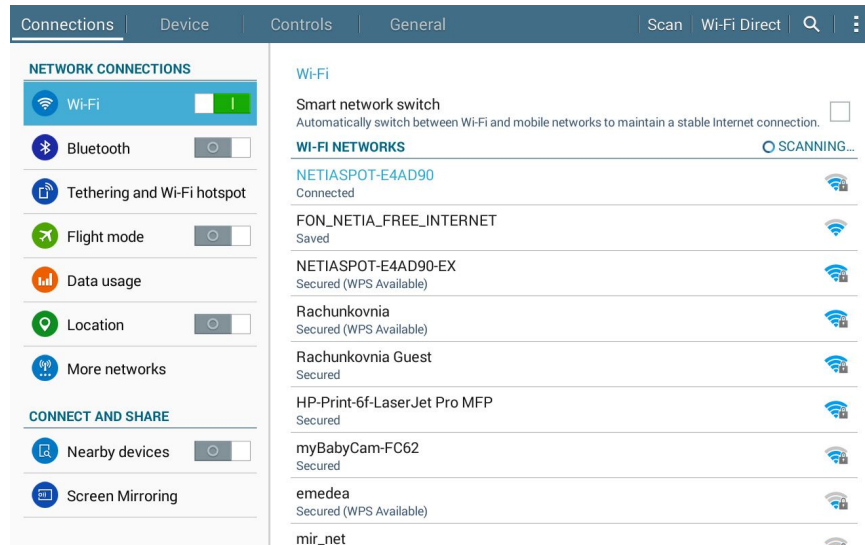
In order to use the solution, you should activate either the 2G/3G/LTE or the WiFi connection to get access to the Internet:

- a) If you prefer to use the GPRS option, insert the SIM card first into the device.

Once the tablet is on, activate data transmission. To do this, go into “Settings”, choose “More networks” from the left menu and select the “Mobile networks” option from the menu on the right. Then, check if the first option is marked.

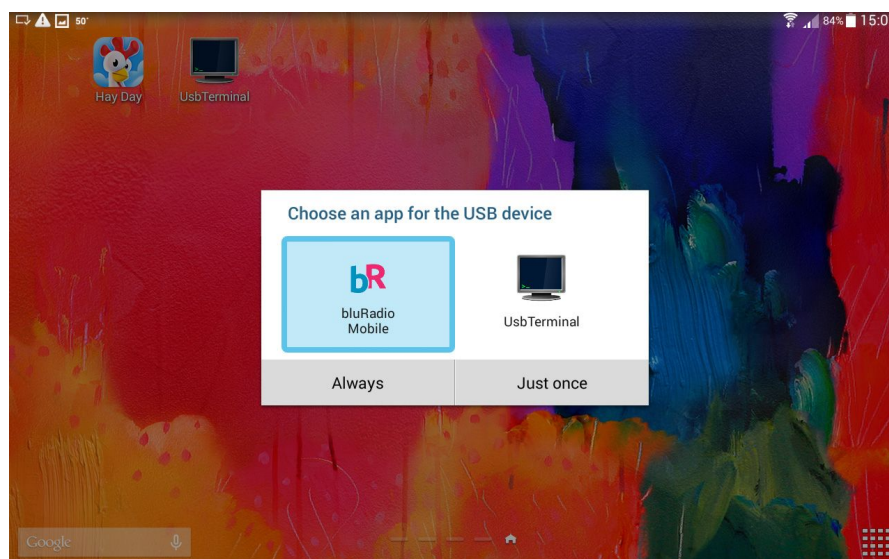


b) To activate the WiFi connection, go into 'Settings' and activate the Wifi option on the left menu. Wait a few seconds for the information regarding available networks to appear. Choose the correct network. You will be asked to provide the password. Confirm by clicking on the 'Connect' button. A window will pop-up, informing you about that the connection was established.



1. Connect the USB hub to the tablet

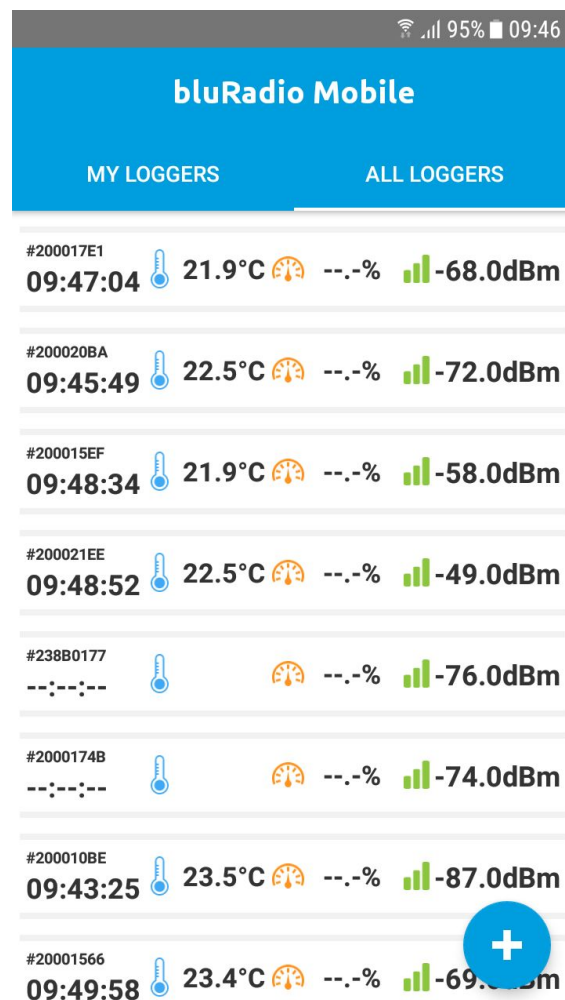
Using the connector provided, plug the USB hub to the micro USB port on the tablet. Choose BluRadio Mobile app from the pop-up window and mark 'Always'.



Wait for the application to start working.

2. BluRadio Mobile

Since the version 1.5 you will see on the main screen two tabs: “MY Loggers” and “ALL Loggers”. In the ALL Logger Tab you will see data from all the loggers that are currently communicating with the station. Data from each logger will be presented in form of a square. By default you will see only the last temperature, ID number of the logger and the time of measurement and signal strength.



If the internet is available on the mobile device the data will be transferred to external server. If you want to observe chosen logger use Add button on the right bottom of the screen. Added loggers will be available in My Loggers Tag.

If you want to display data in the old way please read next points of this document.

3. Configure the loggers on Bluconsole

In order to configure the loggers, you should log in to BluConsole platform using your email and the password provided. You can use the following link:

Measurements

RF loggers

NFC loggers

(1 of 1)

1

15

Description	Active	Status	Temperature	Humidity	Allowed range	Time	Battery	Radio
	ALL							
Room 1	<input checked="" type="checkbox"/>	Connected	23.5°C	41.9%	(15 30)°C (10 90)%	2016-02-25 14:06	<div><div></div></div>	<div><div></div></div>
Fridge	<input checked="" type="checkbox"/>	Connected	3.4°C		(2 8)°C	2016-02-25 14:11	<div><div></div></div>	<div><div></div></div>
Freezer	<input checked="" type="checkbox"/>	Connected	-21.3°C		(-30 -18)°C	2016-02-25 14:14	<div><div></div></div>	<div><div></div></div>
Room 2	<input checked="" type="checkbox"/>	Connected	21.4°C	53.2%	(15 30)°C (10 90)%	2016-02-25 14:16	<div><div></div></div>	<div><div></div></div>
Wine cellar	<input checked="" type="checkbox"/>	Connected	15.3°C	52.9%	(7 18)°C (20 80)%	2016-02-25 14:09	<div><div></div></div>	<div><div></div></div>

(1 of 1)

1

15

You can now place the hub in its final location and start placing the loggers in the wanted locations. Wait around 2030 minutes and check on the „Measurements” page to see if all the loggers are connected.

4. Add repeaters and position the data loggers by using holders

If some loggers are not connected after 30 minutes, position a repeater in proximity of these loggers (in a vertical position, see the photograph below).



Green diode on repeater means that the device is working.

Repeater just need to be connected to the power source by provided AC/DC adapter.



For the best results, repeater should be positioned in proximity of the signal damping element, in a vertical position (diodes located at the bottom), and at least 40cm from the sealing. Repeater shouldn't be installed on the metal surfaces or in proximity of the computers.

If you have a repeater with external antenna, please install the antenna by screwing to the front part of the repeater.



Then connect it to the power supply by using provided AC/DC adapter.



When your repeater will be ready, position the loggers on their final position. A holder is provided with each logger to glue it to a dry surface with the help of the double-face tape provided (just remove the upper layer). After placing the holder on the surface, just screw the datalogger to the holder using the screw provided and a screwdriver (use the two upper holes on the logger).

5. Access temperature reports and graphs

From the „Measurements” section, you can access the graphs for each logger by clicking on „Chart”. From there, you can choose time periods and also download the corresponding CSV or PDF reports.

You can also access the calibration certificate by clicking on „Certificate” in the „Loggers” page and download it as a PDF file.

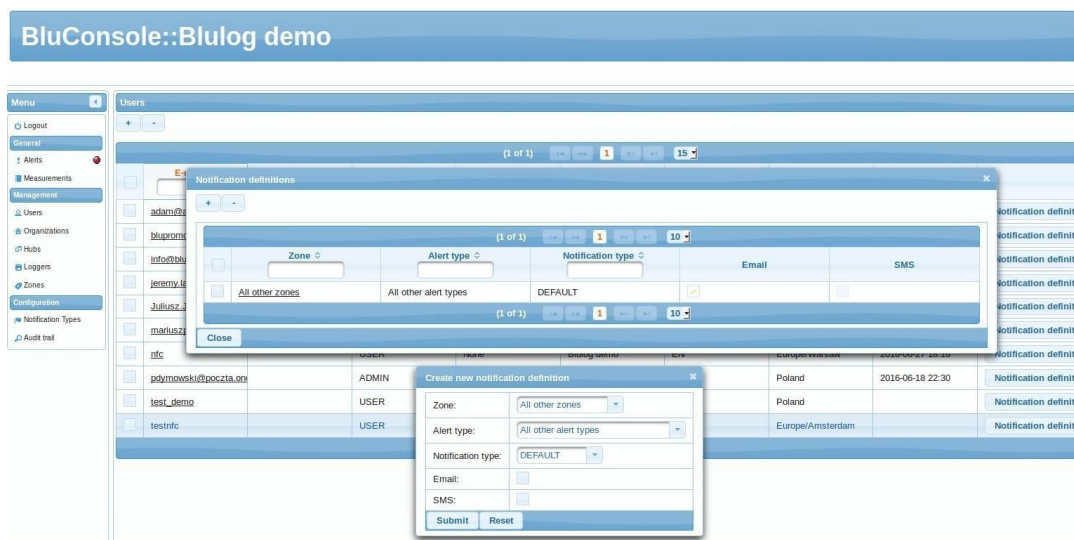
6. Set up alerts

On the „Notification Types” page, you can choose the delay for sending alerts and repeating the alerts by creating a new notification type with the „+” icon. You can have a personalized delay for each logger and choose the notification that goes with the right logger on the „Loggers” page.



A dialog box titled "Create new notificationType" with a close button (X) in the top right corner. It contains five input fields: "Name:", "Delay mi:", "Repeat mi:", "Max repeats:", and "Organization:". The "Organization:" field has a dropdown menu currently showing "Blulog". At the bottom are two buttons: "Submit" and "Reset".

Go to the « Users » page and click on the « Notification definitions » button on the right for the selected user. A window will open and you will see current definitions (by default one definition applies to all zones and to all alert types). You can create a specific notification definition per zone by clicking on the « + » button top left of the window. Then select the right zone, the type of alerts (by default all alert types are selected), the notification type (defined in the page « Notification types ») and whether you wish to receive these notifications via SMS and/or email. You can also apply a new notification definition to all zones (by selecting « All other zones ») but for one specific alert type (for instance « Temperature beyond threshold »)



The image shows the BluConsole::Blulog demo interface. On the left is a sidebar menu with options: Logout, General, Alerts, Measurements, Management, Users, Organizations, Hubs, Loggers, Zones, Configuration, Notification Types, and Audit trail. The main area displays a table of users. Overlaid on this is a "Notification definitions" window for a selected user. This window shows a table with columns for Zone, Alert type, Notification type, Email, and SMS. A "Create new notification definition" dialog box is also open, allowing selection of Zone (All other zones), Alert type (All other alert types), Notification type (DEFAULT), and checkboxes for Email and SMS.

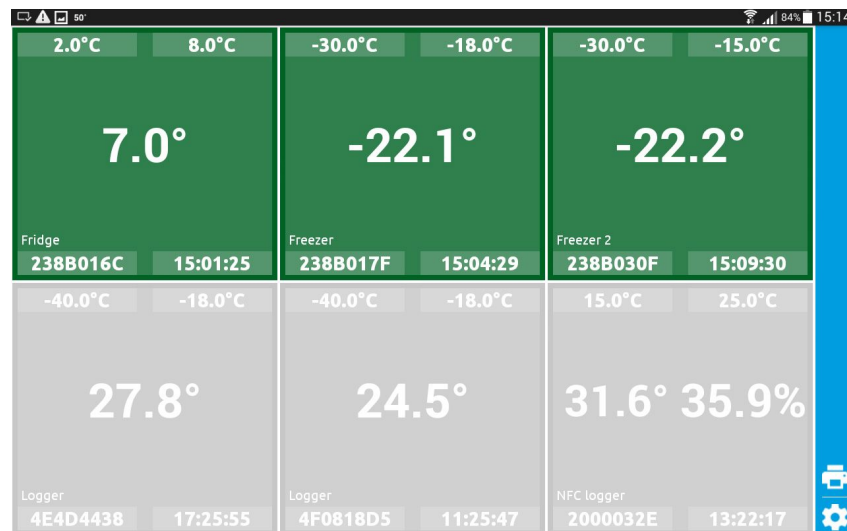
7. BluRadio Mobile after configuration with BluConsole

Since bluRadio 1.5 the view of the six square boxes is not available. To use the same view please install bluMobile application from Google Play Store.

After downloading bluMobile you will be asked to provide your BluConsole login info. Enter them in and click on the 'Save' button. If you use other hubs you limit the result by adding the hub ID number or leave it not filled to see all loggers from your account.

As earlier in bluRadio right now in bluMobile wait for the additional data to appear in squares representing loggers. You can also see that certain squares will change colors. Green color means that the temperature for the given logger is maintained within the authorised limits. Red means that the temperature is above/below the authorised limits while gray color indicates which logger is inactive (either the distance is too big or the battery on the logger is too low).

Data presented in the app can either be downloaded from BluConsole or, in case there is no Internet connection, directly from loggers.



Please remember that the bluRadio and bluMobile are now two separate applications. You need to run bluRadio in background and bluMobile on foreground.

8. Standards

The Blulog loggers:

TDL2-1Y/ TDL2-3Y/ HTDL2-3Y

Are in accordance with the following standards:

- HACCP,
- EN 12830,
- GDP,
- ETSI 300-220.

9. Warranty

36 months warranty under the following conditions.

Damage caused by the following is excluded from the manufacturer's warranty:

- Use contrary to the intended purpose.
- Lack of care, accidents or normal wear.
- External influences (e.g. damage during transport, damage caused by vibration, excess heat or acids).

This warranty expires if:

- The ID number of the product is changed, removed or made illegible.
- Repairs or modifications are undertaken by third parties or unauthorised persons.

10. Safety Instructions

- Only use the product properly, for its intended purpose and within the parameters specified in the technical data.
- Do not try to open the devices and/or use force.

11. Technical data sheet - TDL2 data logger

<i>Temperature scale:</i>	<i>°C</i>
<i>Temperature range:</i>	<i>-40°C to +60°C</i>
<i>Measurement interval:</i>	<i>from 10 sec to 2 hours</i>
<i>Memory capacity:</i>	<i>5,000 measurement points</i>
<i>Resolution:</i>	<i>0.1 °C</i>
<i>Average accuracy between 0 °C and 30 °C:</i>	<i>+/- 0.3 °C</i>
<i>Average accuracy on the rest of the range:</i>	<i>+/- 0,4 °C</i>
<i>Dimensions:</i>	<i>85 x 55 x 5 mm</i>
<i>Weight:</i>	<i>30 g</i>
<i>Radio frequency:</i>	<i>869 MHz</i>
<i>Protection class:</i>	<i>IP67</i>
<i>Autonomy</i>	<i>3 years</i>
<i>Time:</i>	<i>UTC</i>
<i>Equipment needed:</i>	<i>Hub, Internet connection</i>
<i>Period of validity</i>	<i>On device</i>
<i>Data reading period post end of rec:</i>	<i>1 year</i>
<i>Free range:</i>	<i>up to 700 meters</i>